

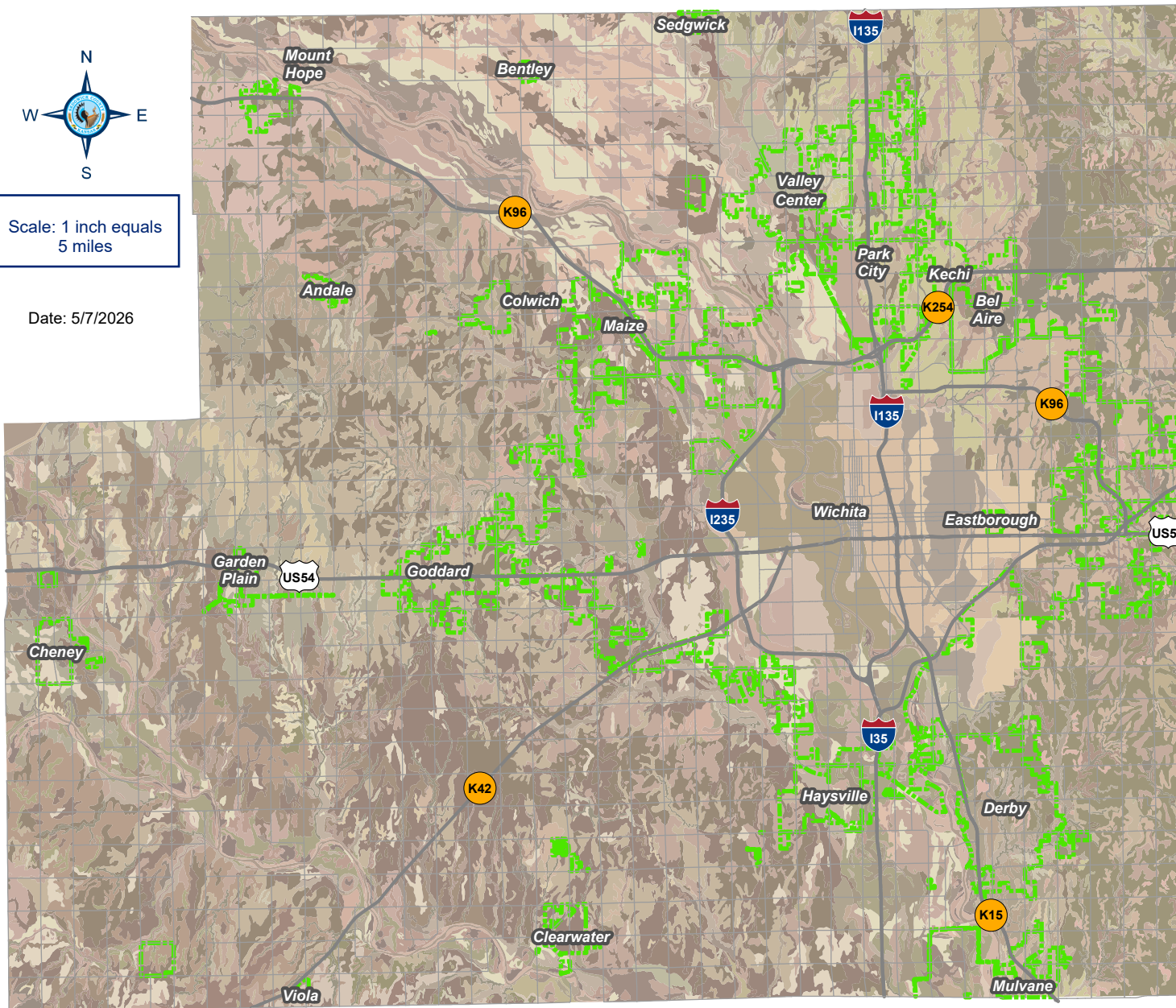
Soil Types

Sedgwick County, Kansas



Scale: 1 inch equals 5 miles

Date: 5/7/2026



- 125th N
- 117th N
- 109th N
- 101st N
- 93rd N
- 85th N
- 77th N
- 69th N
- 61st N
- 53rd N
- 45th N
- 37th N
- 29th N
- 21st N
- 13th N
- Central
- Kellogg
- Harry
- Pawnee
- 31st S
- MacArthur
- 47th S
- 55th S
- 63rd S
- 71st S
- 79th S
- 87th S
- 95th S
- 103rd S
- 111th S
- 119th S

2152	5858	6057
3725	5867	6060
3800	5868	6220
3801	5869	6224
3824	5879	6228
3825	5886	6236
3843	5891	6244
3857	5892	6246
3858	5893	6250
3890	5894	6252
3891	5896	6254
3911	5908	6320
3921	5909	6321
3930	5924	6322
4570	5925	6323
4671	5926	6330
4673	5928	6346
4674	5941	6347
5324	5943	6348
5464	5956	6364
5480	5957	6369
5550	5958	6370
5560	5960	6419
5633	5961	6420
5670	5967	6423
5672	5970	6442
5675	5976	6443
5832	5977	9970
5836	5978	9971
5841	5979	9986
5845	5982	9993
5850	6051	9999
5856	6052	

- 407th W
- 391st W
- 375th W
- 359th W
- 343rd W
- 327th W
- 311th W
- 295th W
- 279th W
- 263rd W
- 247th W
- 231st W
- 215th W
- 199th W
- 183rd W
- 167th W
- 151st W
- 135th W
- 119th W
- Maize
- Tyler
- Ridge
- Hoover
- West
- Meridian
- Seneca
- Broadway
- Hydraulic
- Hillside
- Oliver
- Woodlawn
- Rock
- Webb
- Greenwich
- 127th E
- 143rd E
- 159th E



SEDGWICK COUNTY

Geographic Information Services

© 2026 Sedgwick County Kansas Government. All rights reserved.

File: X:\maps\quarterly_maps_arpro\General.aprx

It is understood that the Sedgwick County GIS, Division of Information and Operations, has no indication or reason to believe that there are inaccuracies in information incorporated in the base map.

The GIS personnel make no warranty or representation, either expressed or implied, with respect to the information or the data displayed.