

What do you do if you or someone else is sexually abused, sexually harassed or sexually assaulted?

- Tell any adult you trust
- Tell your parent, legal guardian or other family member
- Fill out a grievance
- Contact the PREA Coordinator for Sedgwick County Department of Corrections, 316-660-1649
- Call the Kansas Protection Report Center at 1-800-922-5330



Safety Tips:

- Be aware of your situation.
- Don't be afraid of saying "No."
- Do not accept items or gifts from clients or staff.
- Avoid secluded areas.
- If you are being pressured, report it to someone you trust.

The Sedgwick County Department of Corrections is committed to your safety!

Sedgwick County Department of Corrections Services and Locations:

Criminal Justice Alternative Programs

Pretrial Services Program
316-660-1740

*Sedgwick County
Specialty Courts*
316-660-9500

Community Corrections

Adult Field Services (AFS)

*Adult Intensive Supervision
Program (AISP)*
316-660-7003

*Adult Residential and Work
Release Facility*
316-660-9500

Juvenile Services

*Juvenile Intake and
Assessment Center (JIAC)*
316-660-5350

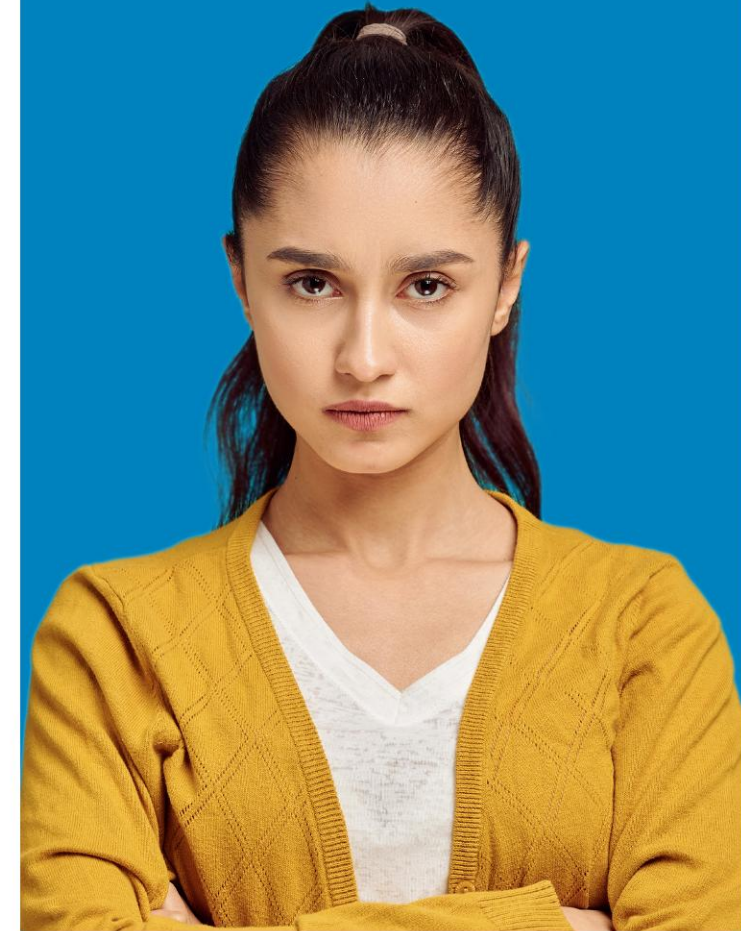
*Juvenile Detention
Facility (JDF)*
316-660-9750
700 S. Hydraulic
Wichita, KS 67211

*Juvenile Residential
Facility (JRF)*
316-660-9775

Juvenile Field Services
316-660-5380



For more information on the services listed, please visit
sedgwickcounty.org/corrections



Sexual Assault and Abuse

IT IS AGAINST THE LAW!



Sedgwick County Department of
Corrections PREA Coordinator

316-660-1649



Kansas Protection Report Center

1-800-922-5330

What is PREA?

PREA stands for the Prison Rape Elimination Act, which was signed into law by President George W. Bush on September 4, 2003.

What is the purpose of PREA?

PREA is intended to increase safety through education, engagement, enforcement and the elimination of dangerous and harmful behaviors.

What is physical abuse?

Physical abuse is something done to you that causes physical pain or injury to your body, often called an assault.

What is sexual abuse?

Sexual abuse is a sexual act committed against you or the intentional touching of your body in a sexual way by another person.

Sexual contact, touching of genitals, kissing and sexual harassment are prohibited and punishable by policy and/ or law.

No employee/client sexual relationship is allowed.

What is Undue Familiarity?

An employee/client relationship or any attempt to initiate a relationship that is not part of the employee's work duties. This includes personal and business relationships that take place while on or off duty.

Examples include but are not limited to romantic or intimate behavior, socializing and correspondence, such as the sharing of photos and contact via mail, telephone or social media.



What programs?

PREA applies to all residential centers or confinement facilities. This includes all of the Sedgwick County Department of Corrections adult and juvenile facilities or programs.

Sedgwick County Department of Corrections shall promptly investigate and enforce laws and policies of "zero tolerance" relating to all allegations of sexual acts, harassment or sexual misconduct in any of its facilities. The department shall provide a comprehensive sexual assault prevention and intervention program that includes:

- Education
- Prevention
- Prompt Intervention
- Discipline/Prosecution for assailants
- Treatment for victims

What should clients expect?

Clients should expect a facility that is free from any form of abuse.