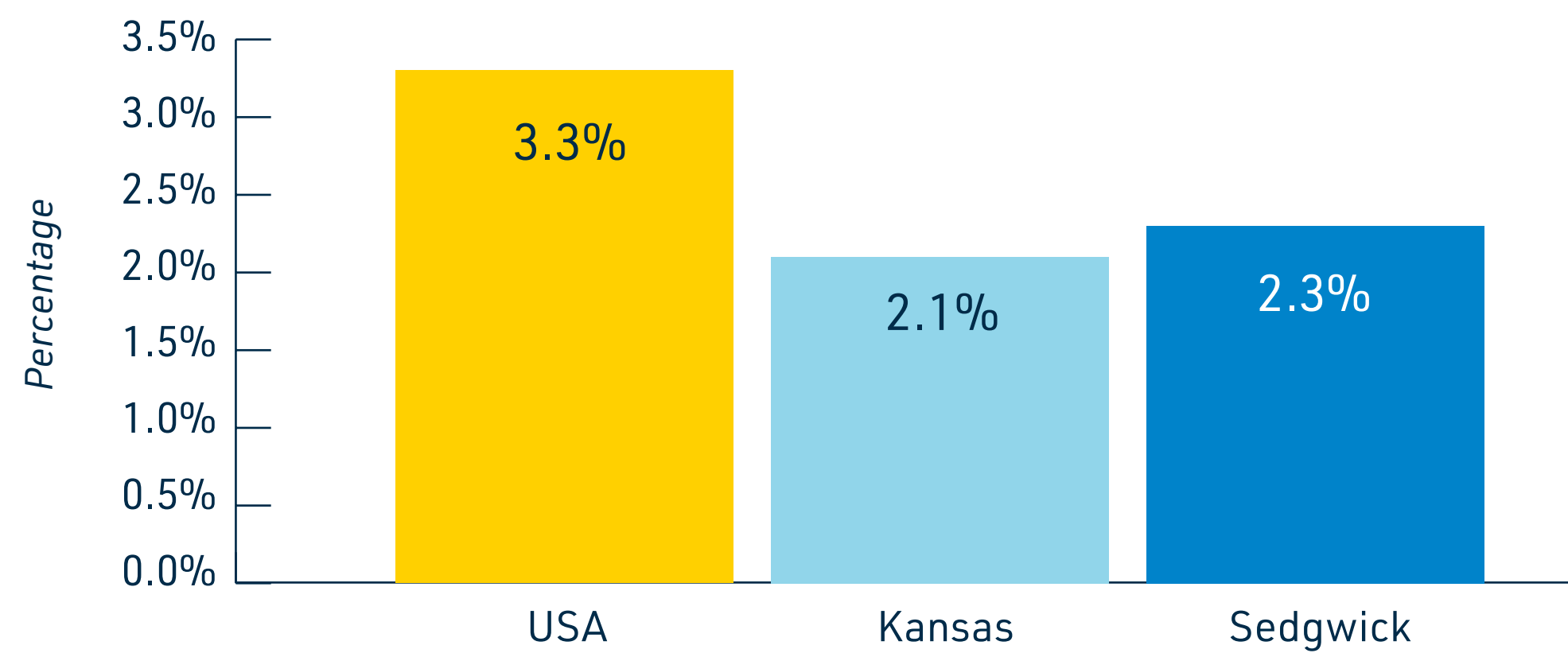


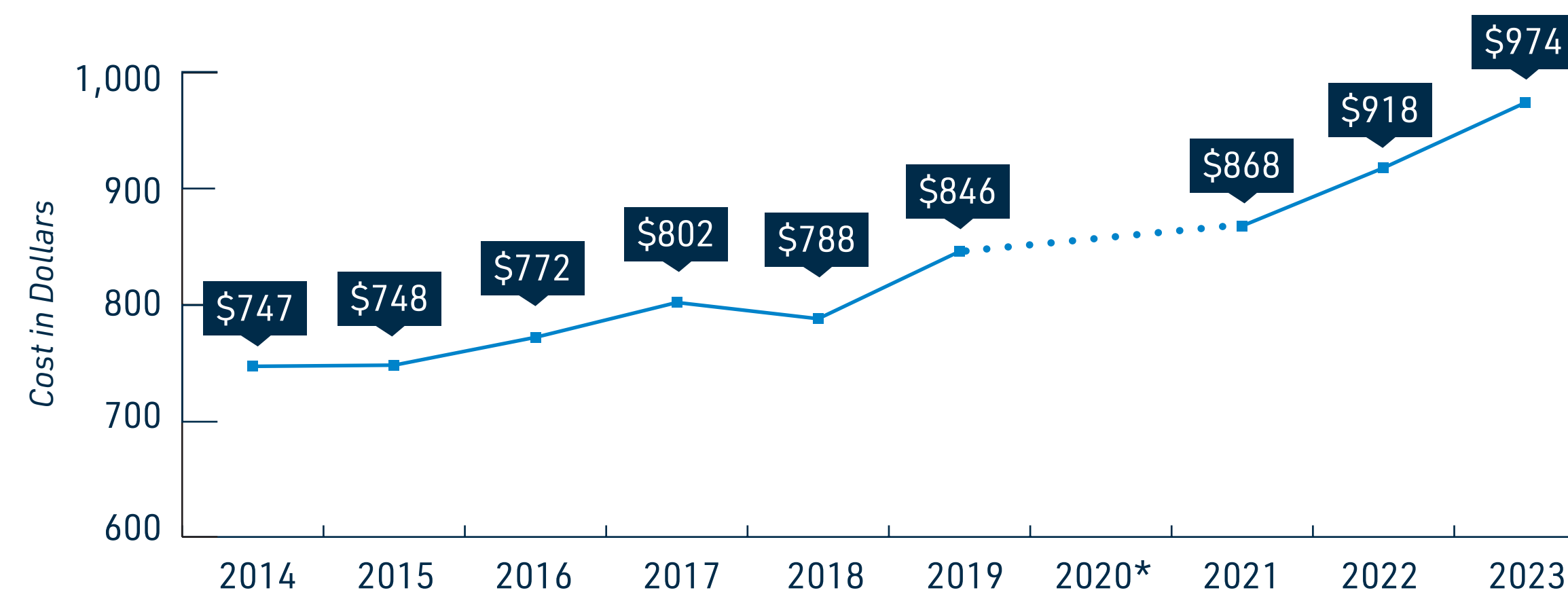
HOUSING

SEDGWICK COUNTY VS STATE & NATIONAL OVERCROWDED HOUSING UNITS



SOURCE: ACS 2023 (5-YEAR)

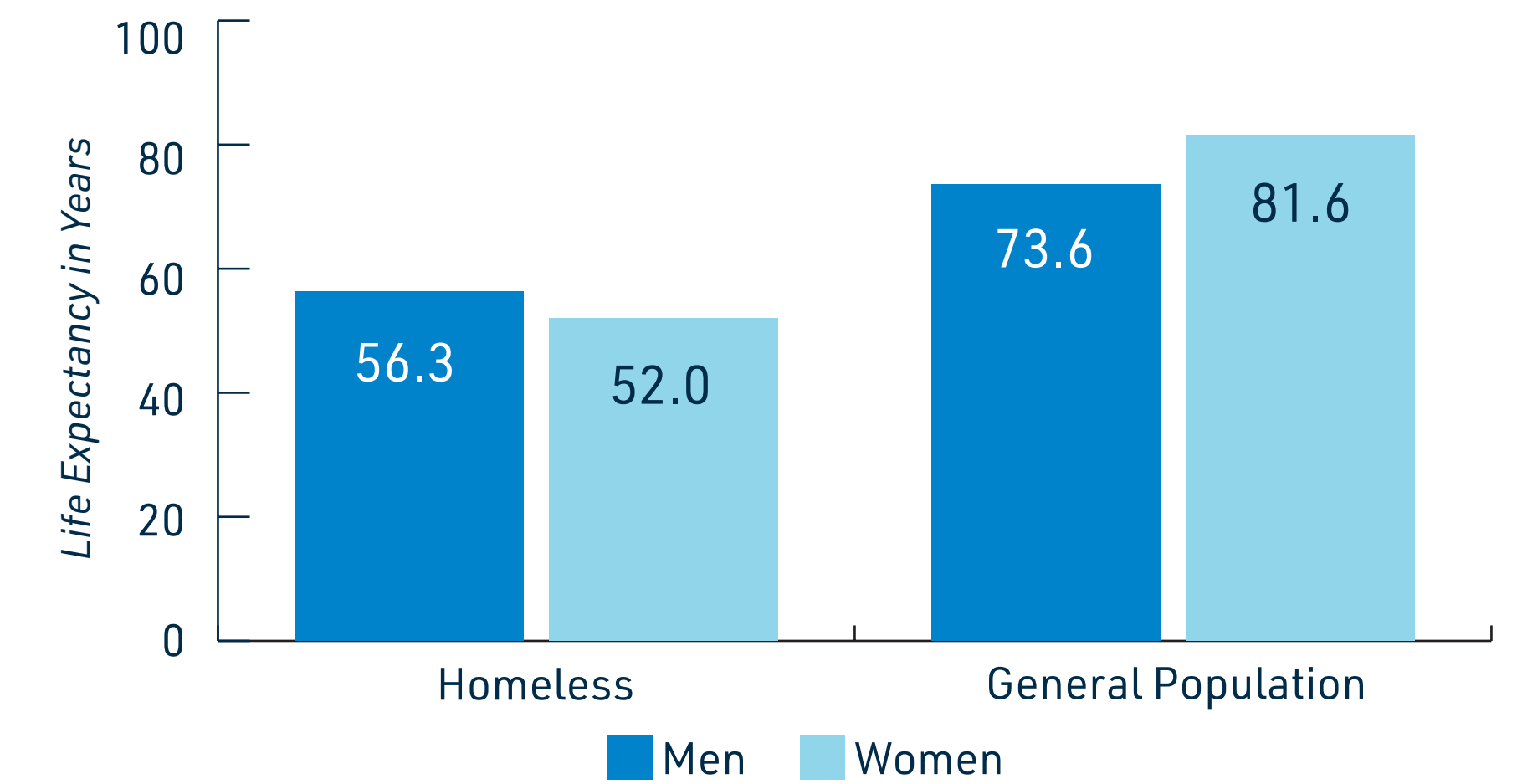
SEDGWICK COUNTY MEDIAN RENT



*NOTE: NO DATA IS AVAILABLE FOR 2020.

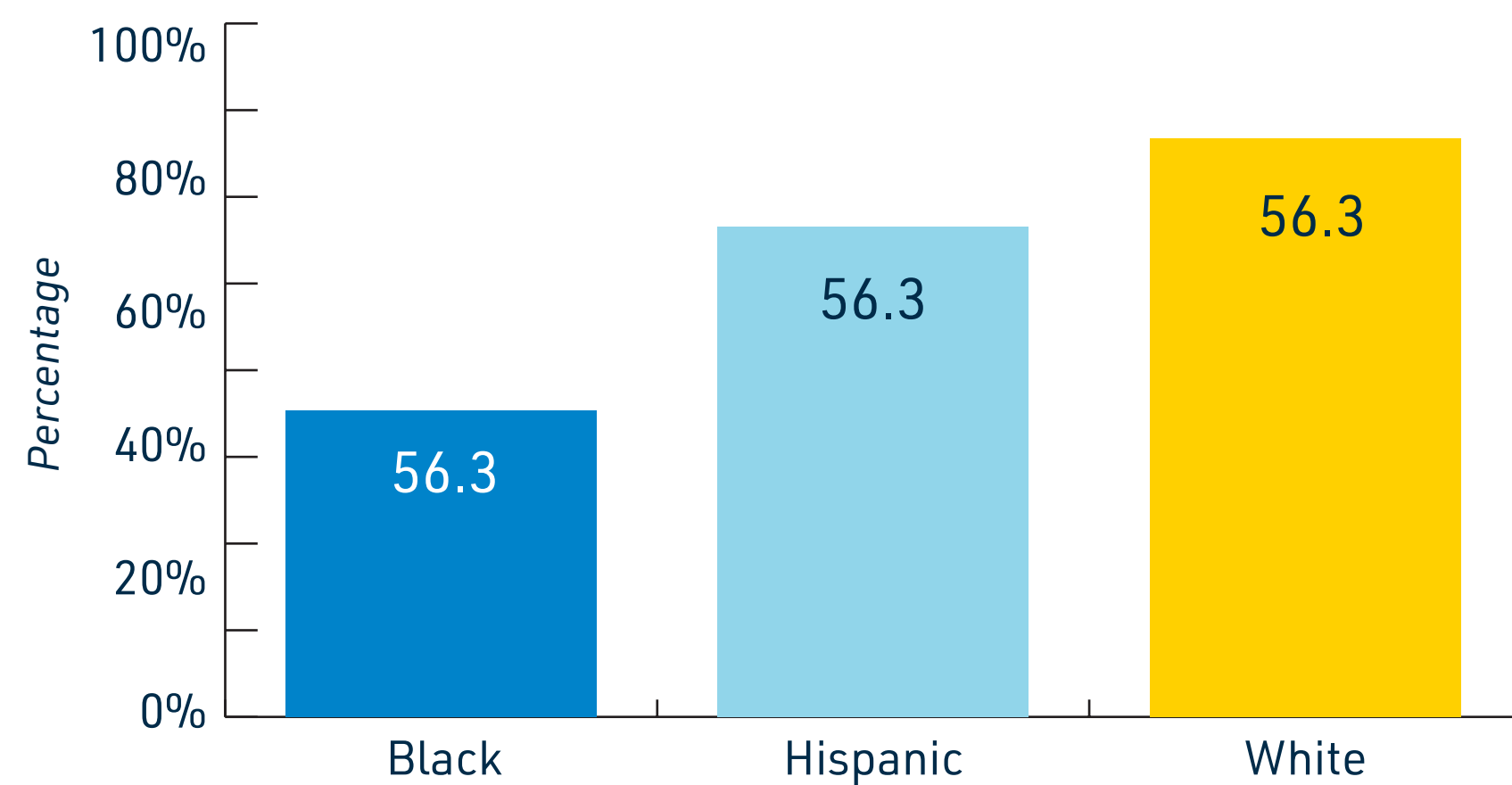
SOURCE: ACS 2014-2023 (1-YEAR)

LIFE EXPECTANCY BASED ON HOUSING



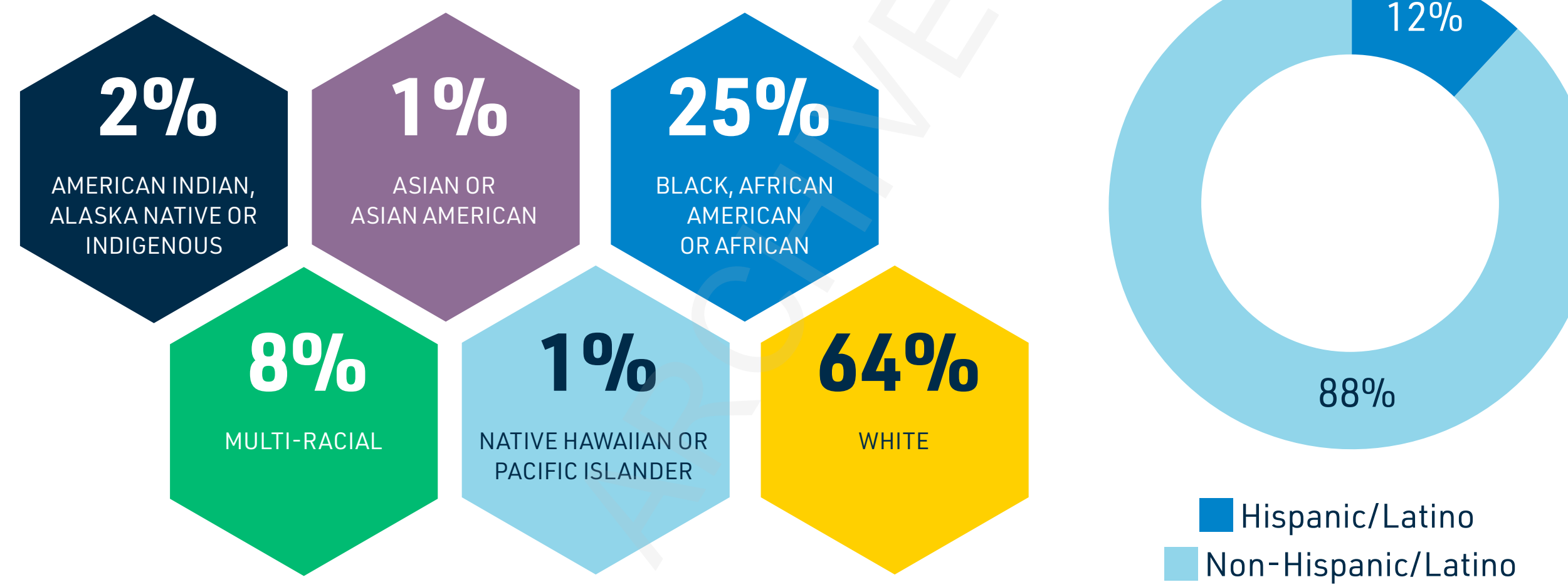
SOURCE: NIH NATIONAL LIBRARY OF MEDICINE, POPULATION OLSZTYN, POLAND (2010-2016)

SEDGWICK COUNTY: HOME OWNERSHIP BY RACE/ETHNICITY



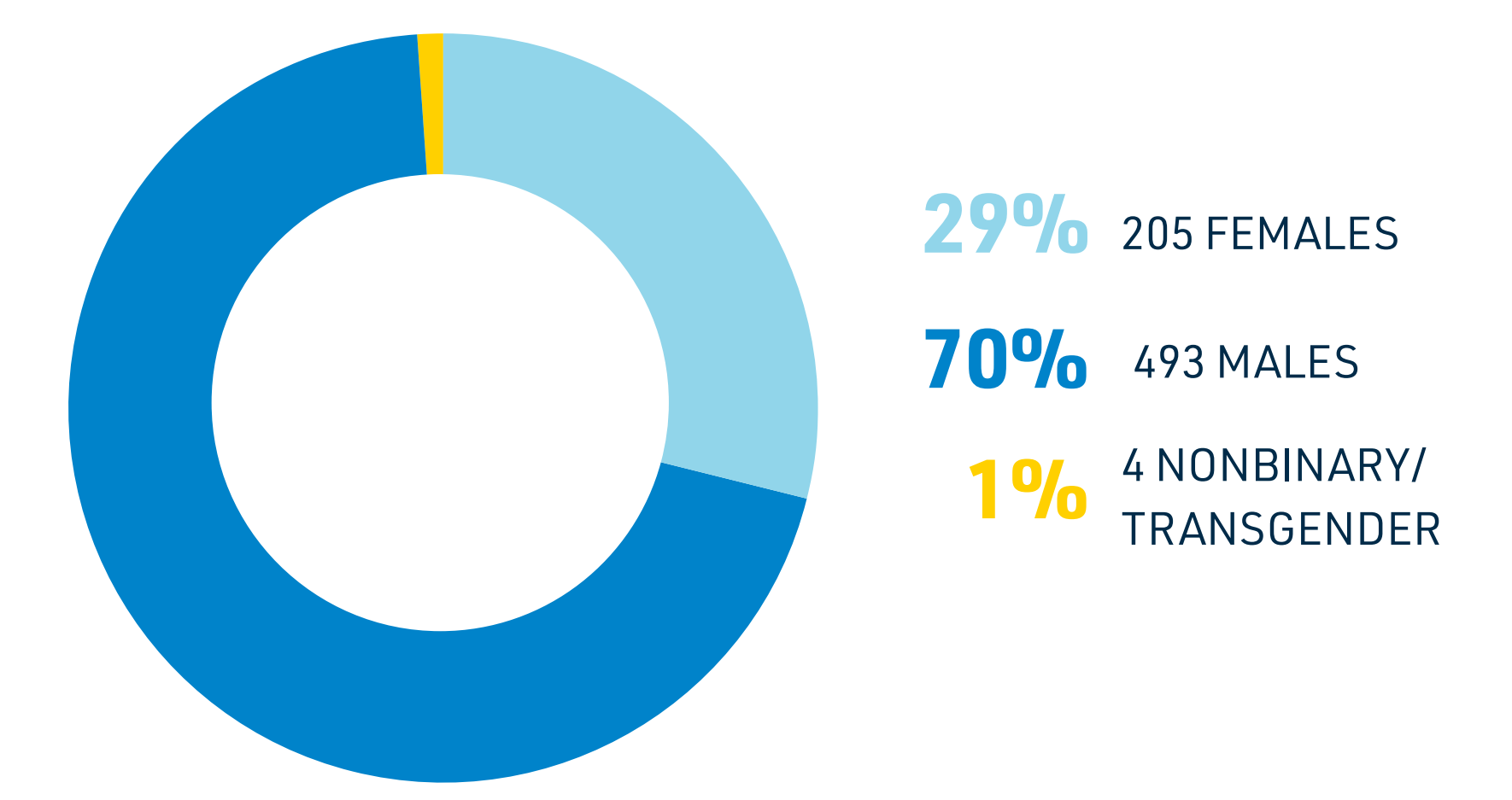
SOURCE: US CENSUS BUREAU ACS 5-YEAR (2023)

WICHITA HOMELESSNESS BY RACE/ETHNICITY



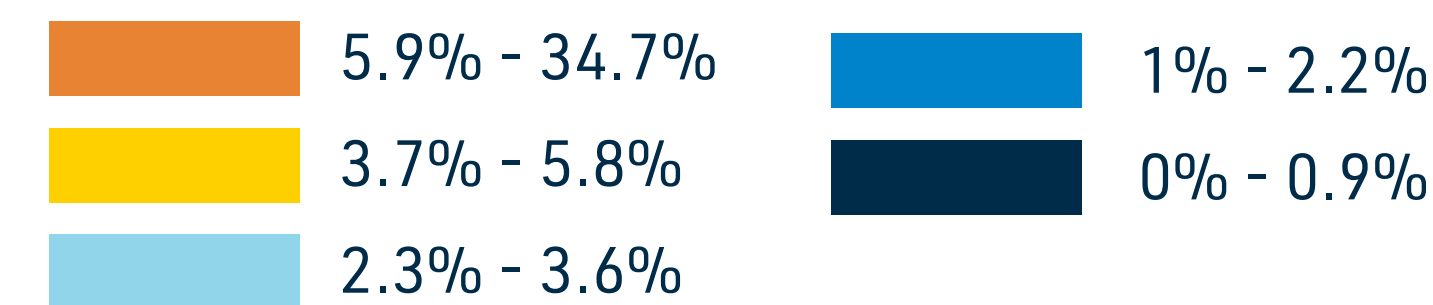
SOURCE: UNITEDWAYPLAINS.ORG/DOWNLOAD/251/IMPACT-ICT-COC/18566/2023-POINT-IN-TIME-HANDOUT-FINAL

WICHITA HOMELESSNESS BY GENDER



SOURCE: UNITEDWAYPLAINS.ORG/DOWNLOAD/251/IMPACT-ICT-COC/18566/2023-POINT-IN-TIME-HANDOUT-FINAL

PERCENTAGE OF OCCUPIED HOUSING UNITS THAT ARE OVERCROWDED IN SEDGWICK COUNTY



This map shows the percentage of occupied housing that are overcrowded as defined by the U.S. Census: having an average of more than 1.01 persons per room.

Some ZIP codes in gray do not have data or are along the edge of the county border, crossing county lines and are not included.

67227 has less than 100 housing units and its percentage is greatly affected by the 34 housing units that are overcrowded.

SOURCE: ACS 2023 (5-YEAR)

RELATIONSHIP MATRIX: HOUSING

		Stems from	Leads to	Both Stems from and Leads to	No Evidence of Association	
Alcohol	Mental Health	Birth Outcomes	Obesity and Diabetes	Drug Misuse	Poverty	Heart and Kidney Disease
Food Environment	Tobacco and Vaping	Family Planning	Violence and Crime	Healthcare Access	Education	Pulmonary Disease

WHAT COMES TO MIND WHEN I SAY A HEALTHY COMMUNITY?: "More housing options and better health resources to help the elderly community with their houses..."

COMMUNITY VOICES Excerpt from the Community Listening Session