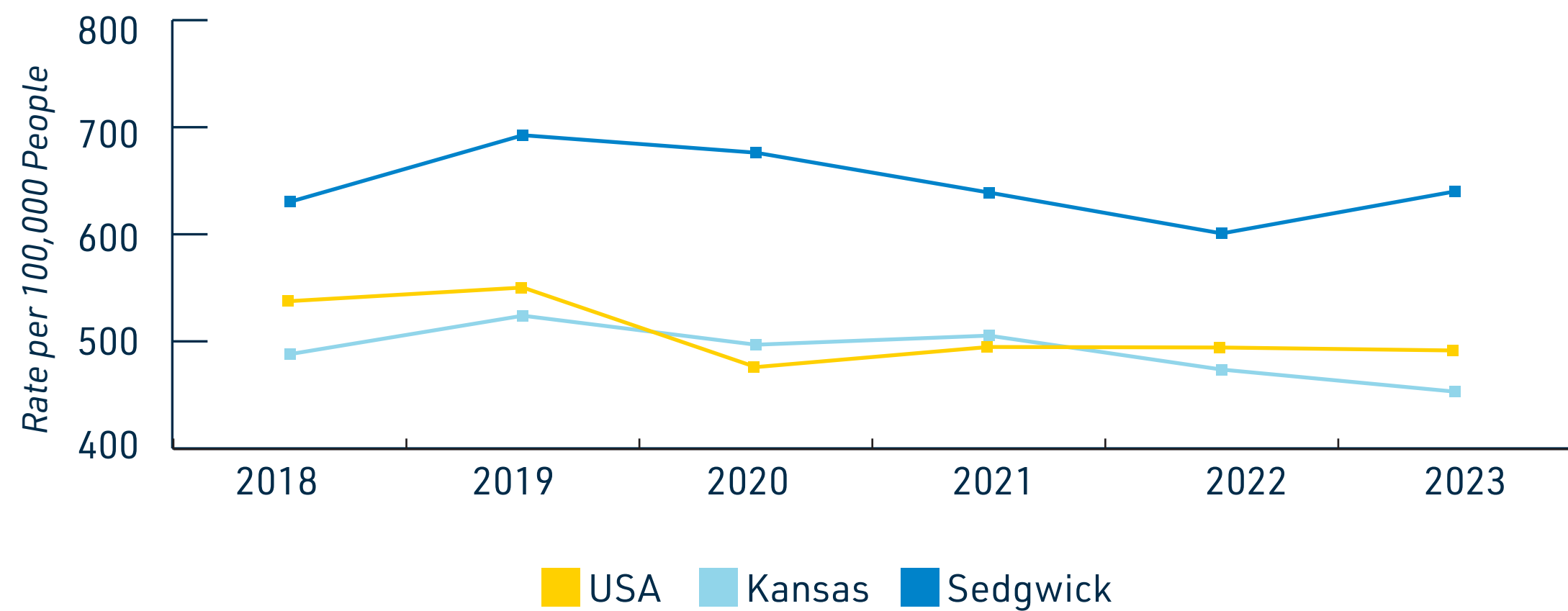


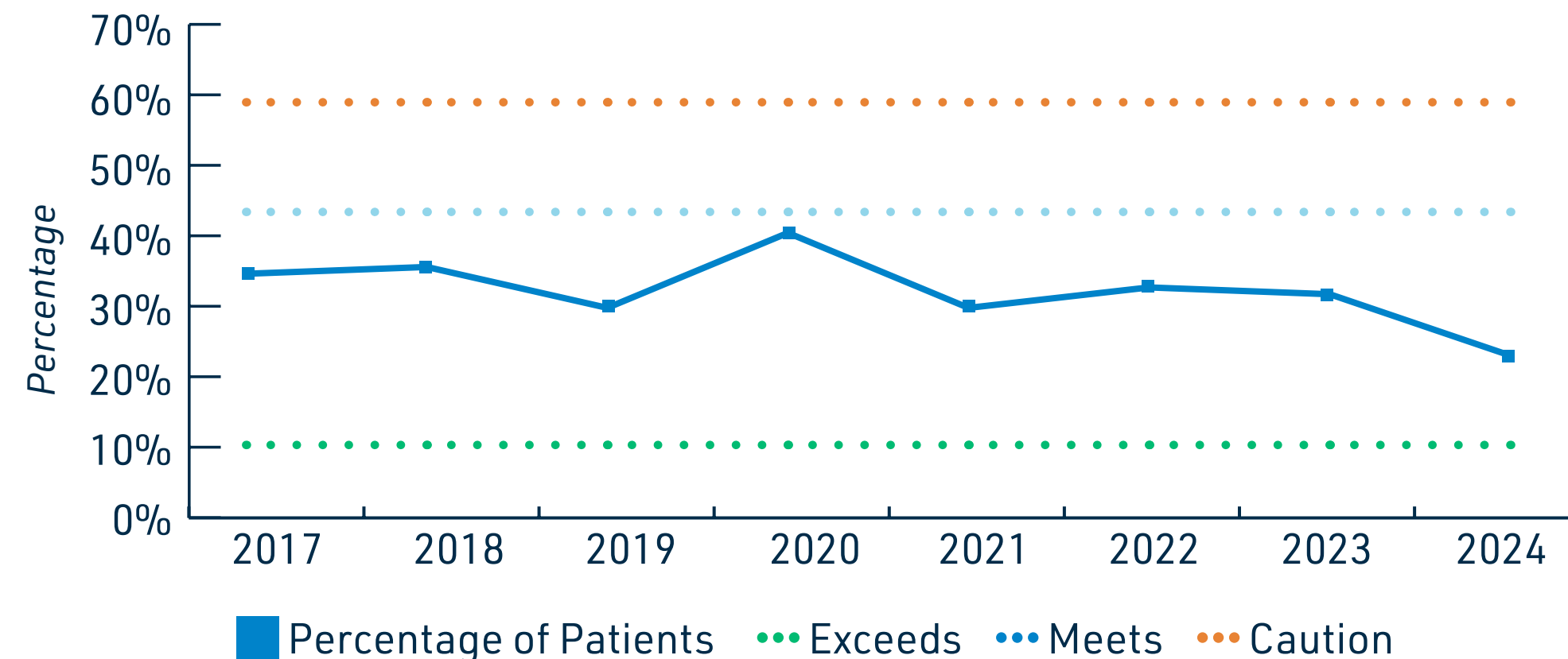
FAMILY PLANNING

SEDGWICK COUNTY VS STATE & NATIONAL CHLAMYDIA RATE



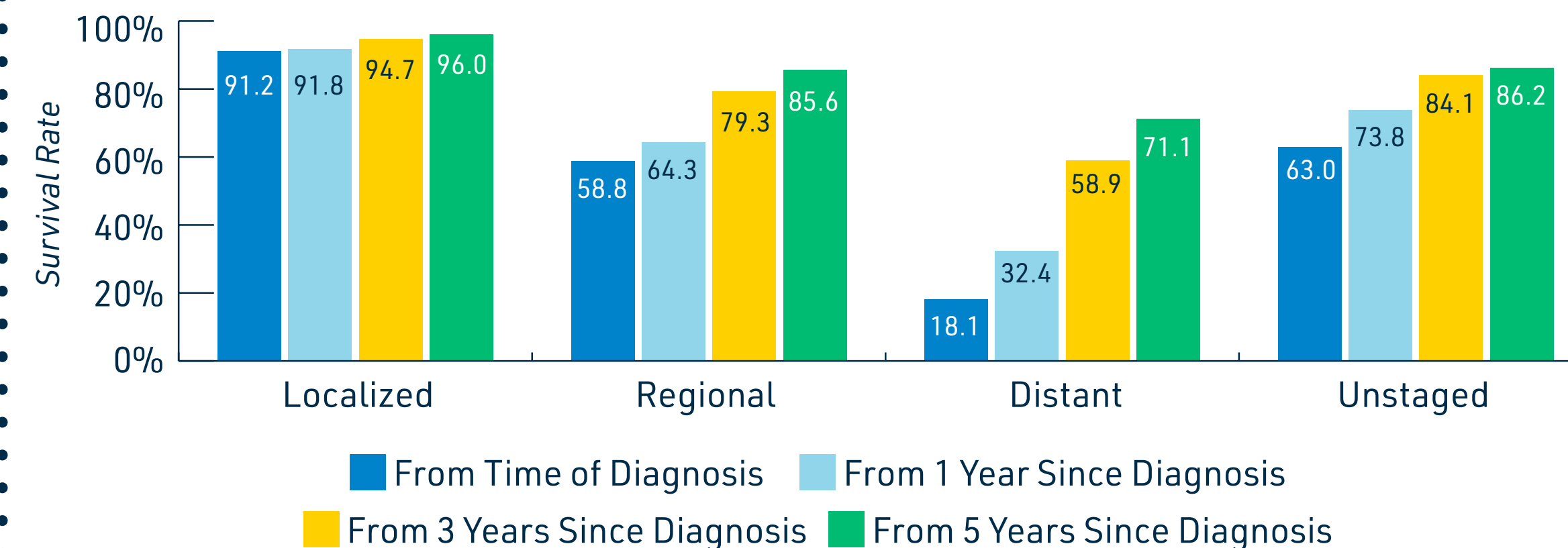
SOURCE: CDC NCHHSTP

PERCENT OF SCHD FAMILY PLANNING PATIENTS WITH UNPLANNED PREGNANCIES



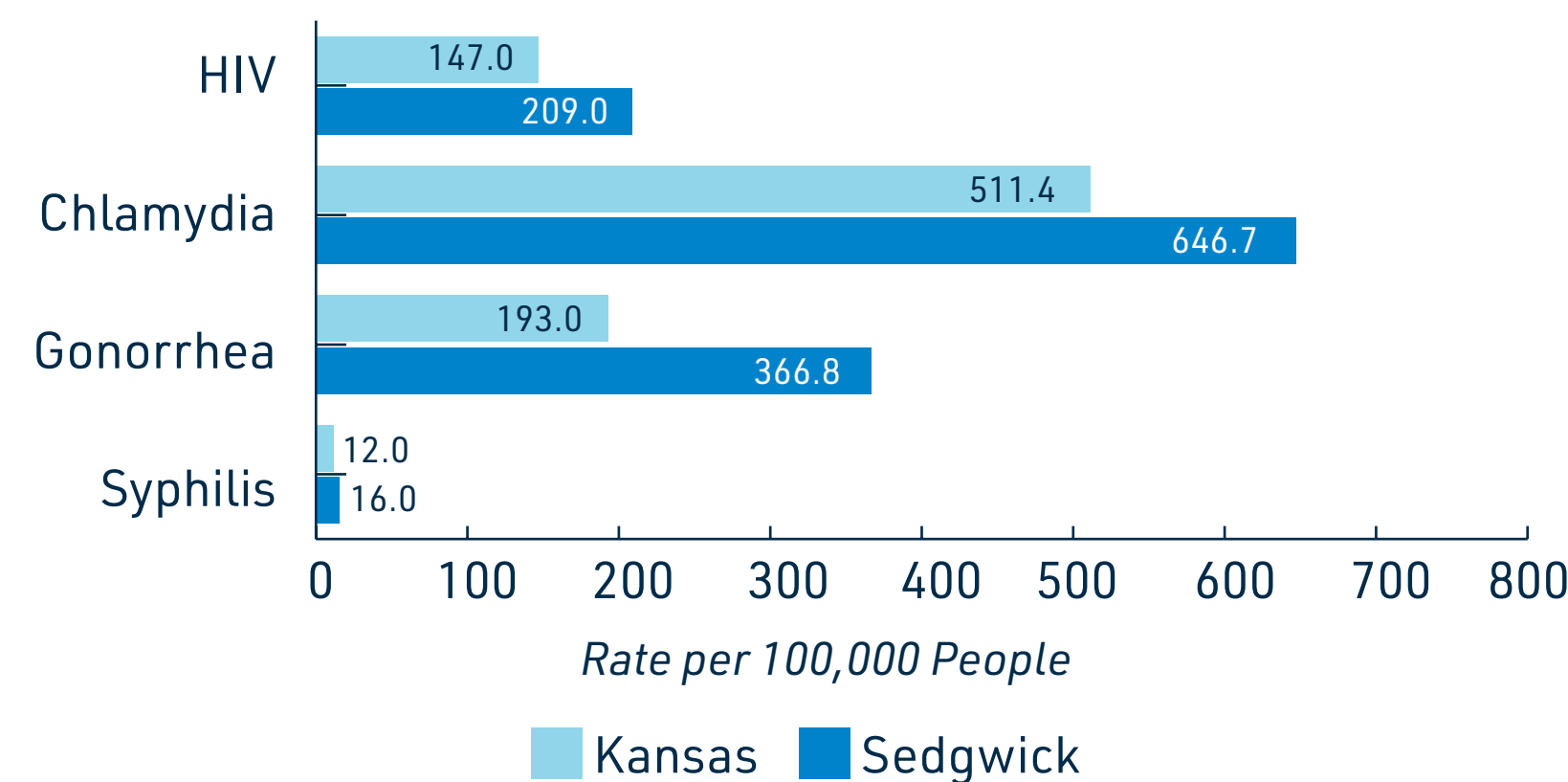
SOURCE: SCHD FAMILY PLANNING CLINIC

EFFECTS ON LIFESPAN; NATIONAL AVERAGE CHANCE OF SURVIVAL 5 YEARS AFTER DIAGNOSIS OF CERVICAL CANCER



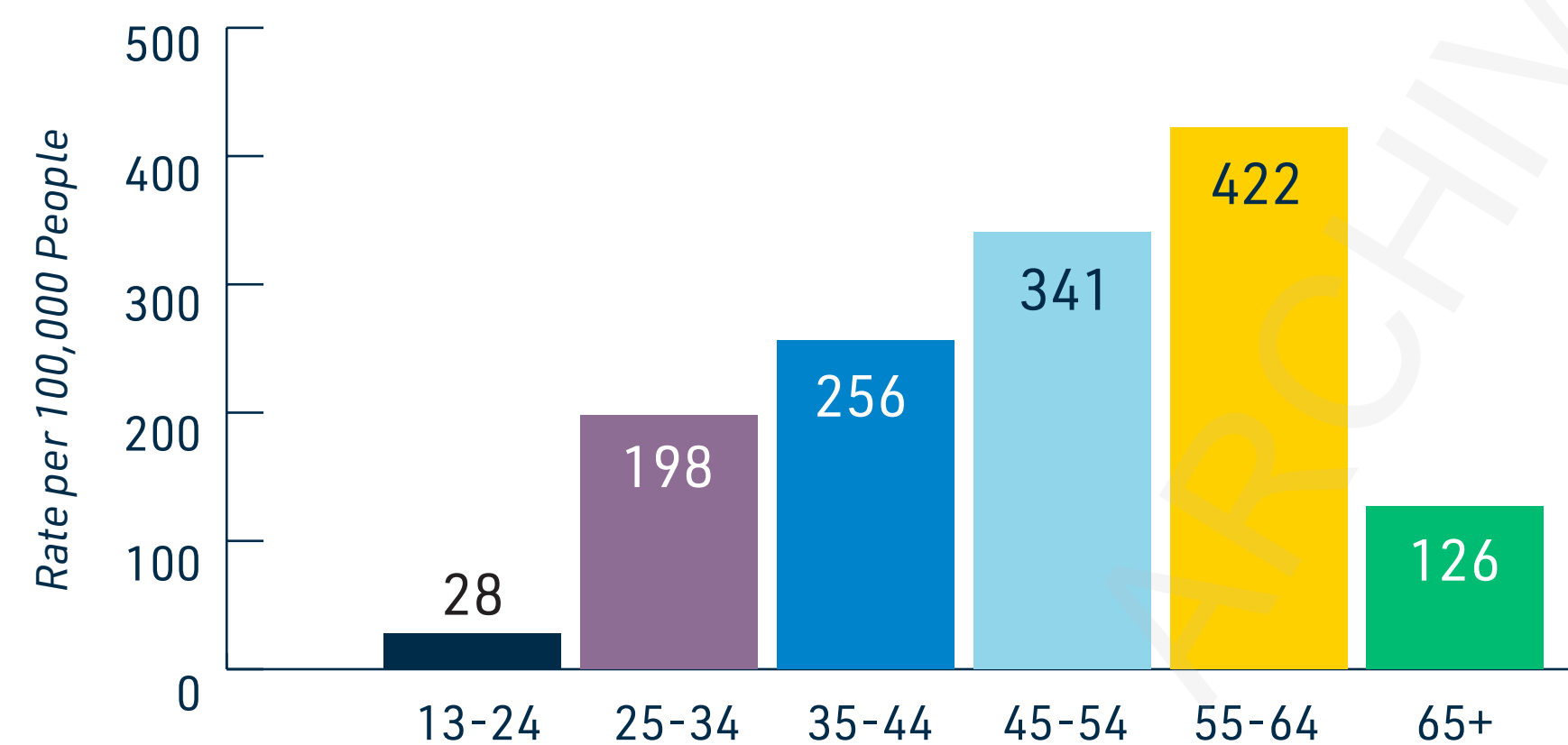
SOURCE: NATIONAL CANCER INSTITUTE SEER DATABASE

SEDGWICK COUNTY VS STATE SEXUALLY TRANSMITTED INFECTIONS



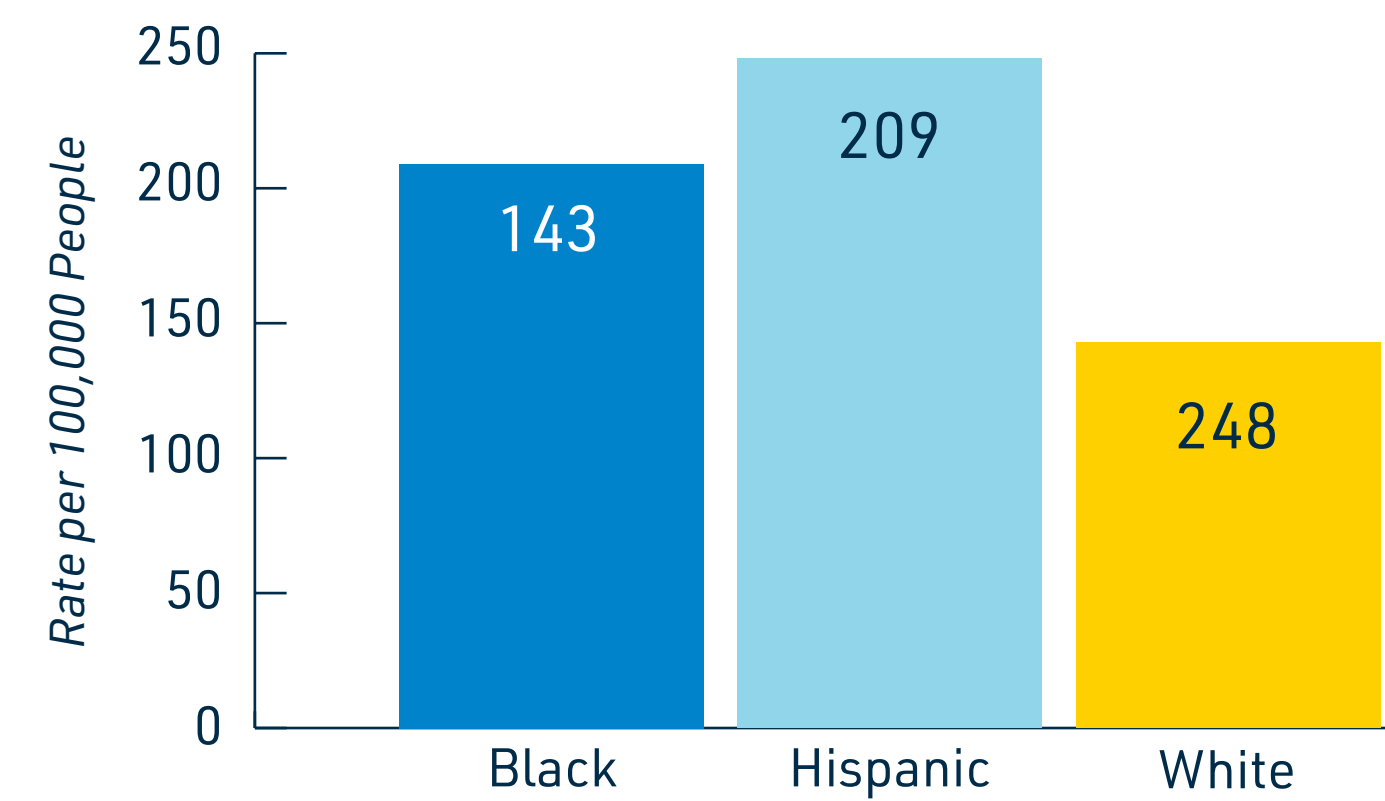
SOURCE: KDHE STI REPORT, 2021

HIV RATE FOR SEDGWICK COUNTY RESIDENTS BY AGE GROUP



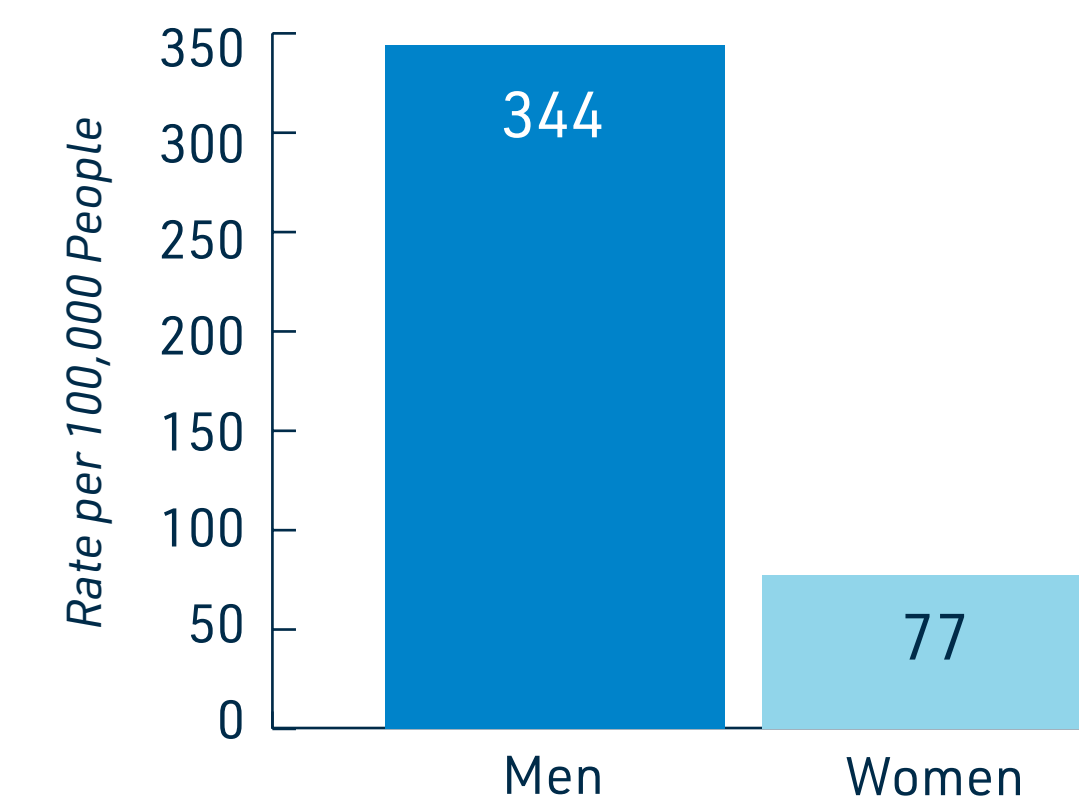
SOURCE: EMORY UNIVERSITY AIDS, 2022

HIV RATE FOR SEDGWICK COUNTY RESIDENTS BY RACE/ETHNICITY



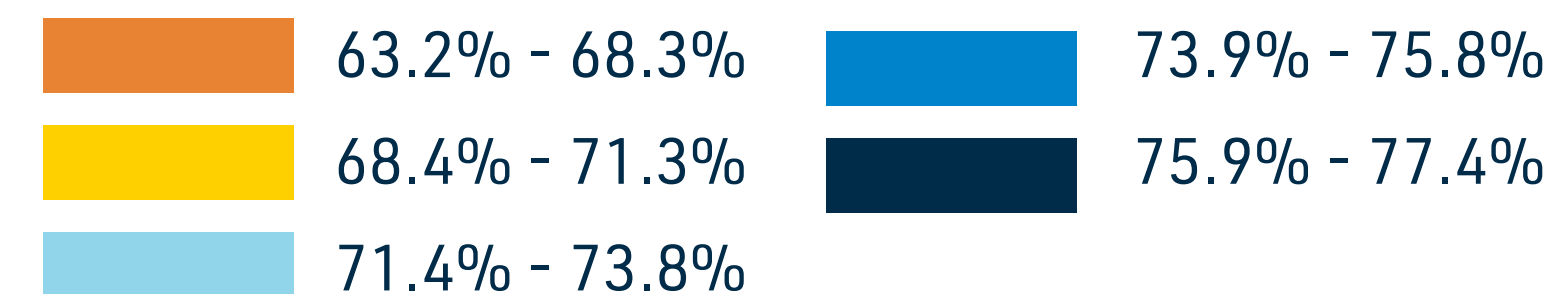
SOURCE: EMORY UNIVERSITY AIDS, 2022

HIV RATE FOR SEDGWICK COUNTY RESIDENTS BY SEX



SOURCE: EMORY UNIVERSITY AIDS, 2022

SEDGWICK COUNTY: PERCENTAGE OF RESIDENTS WHO REPORT HAVING HAD A PAP SMEAR TEST WITHIN THE LAST THREE YEARS



The map shows the percentage of Sedgwick County Residents aged 21-29 who report having had a Pap Smear test within the last 3 years, aged 30-65 and had a Pap Smear Test within the last 3 years or HPV test AND Pap Smear test within 5 years.

Some ZIP Codes in gray do not have data or are along the edge of the county border lines and are not included.

SOURCE: KANSAS HEALTH MATTERS (CENSUS PLACES), 2020

RELATIONSHIP MATRIX: FAMILY PLANNING

		Stems from	Leads to	Both Stems from and Leads to	No Evidence of Association	
Alcohol	Mental Health	Birth Outcomes	Obesity and Diabetes	Drug Misuse	Poverty	Housing
Food Environment	Tobacco and Vaping	Healthcare Access	Violence and Crime	Heart and Kidney Disease	Education	Pulmonary Disease

ARE THERE THINGS THAT MAKE IT HARD FOR YOU TO BE HEALTHY?: "HPV vaccine and stigma - ultimately we ended up getting them because the doctor said it can protect other things too."

COMMUNITY VOICES Excerpt from the Community Listening Session